

# mark-through GUIDELINES®

## CT grid for localizing needle entry sites

Exclusive *all-over* adhesive backing and exceptional mark-through capability help increase accuracy of needle placement which may reduce painful re-sticks and rescans that expose the patient to additional radiation.

Distinct lead-free radiopaque lines help provide an artifact-free image. Extra spacing between lines 1 and 2 helps to confirm orientation on the image.

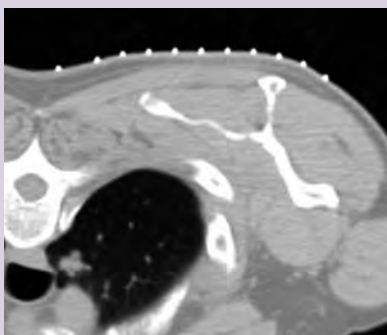


Easily mark through the material anywhere on the grid with a fine point Sharpie® *even* along the vertical radiopaque grid lines.



Ink instantly transfers through grid material to clearly mark entry site on skin.

### MARK-THROUGH GUIDELINES

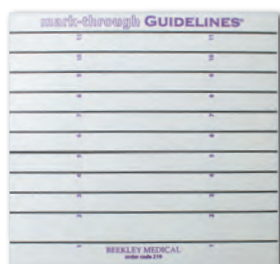


Mark-Through Guidelines CT biopsy grids conforms closely to skin line for precise localization of the needle entry site.

### OTHER GRID METHODS



Other grid methods can lift off patient's skin, reducing accuracy and making it difficult to correlate to the image.



REF 219

QTY 15 / Box

- 6.25" (15.88cm) x 6.75" (17.15cm) biopsy grid
- ideal for CT-guided biopsies, drainage procedures and pain management injections

**Beekley Medical®**  
when your diagnosis must be right®



Manufactured by Beekley Corporation

One Prestige Lane, Bristol, CT 06010-7454 USA Tel: 1.800.233.5539 or +1.860.583.4700 Fax: 1.800.735.1234 beekley.com

BEEKLEY, BEEKLEY MEDICAL, GUIDELINES, MARK-THROUGH GUIDELINES and WHEN YOUR DIAGNOSIS MUST BE RIGHT are Reg. U.S. Pat. & Tm. Off. BEEKLEY is a Registered Community Trademark. BEEKLEY is a registered trademark in Canada.

© 2023 Beekley Corporation. All rights reserved.

Sharpie® is a registered trademark of Rubbermaid Newell Corporation.

#### WARNINGS AND PRECAUTIONS:

- Non-Sterile
- Single Patient Use Only; Do Not Reuse
- Not made with natural rubber latex
- Lead-Free



EC REP

EMERGO EUROPE  
Westervoortsedijk 60  
6827 AT Arnhem  
The Netherlands

REV: MTGL\_INF\_0523